



86 Series Three-phase Hybrid Stepper Motor

High Speed, High Torque, Low Noise, Low Vibration



Insulation Resistance — 500VDC 100MΩ Min
 Axial Clearance — 1mm Max
 Radial Runout — 0.02mm Max
 Temperature Rise — 65K Max
 Dielectric Strength — 750V AC 1Min
 Insulation Class — B 级
 Ambient Temperature — -25℃~+40℃
 Operating Humidity — <85%RH
 Storage Temperature — -5℃~+30℃
 Storage Humidity — <75%RH

技术数据

Code	Model	Phase	Step angle (°)	Quiescent Current (A)	Resistance (Ω)	Inductance (mH)	Holding Torque (N·m)	Detent Torque (N·m)	Voltage (VDC)	Weight (Kg)	Rotor Inertia (g·cm ²)	Dimension
062040	86BYG350AH-SAKSML-0201	3	0.6/1.2	2.0	5.86	25.5	2.5	0.4	80~350	2	1320	1
062000	86BYG350AH-SAKSHL-0201	3	0.6/1.2	2.0	5.86	25.5	2.5	0.4	80~350	2	1320	2
062030	86BYG350BH-SAKSML-0201	3	0.6/1.2	2.0	6.97	31.1	5	0.4	80~350	3	2400	1
062010	86BYG350BH-SAKSHL-0201	3	0.6/1.2	2.0	6.97	31.1	5	0.4	80~350	3	2400	2
062050	86BYG350CH-SAKSML-0301	3	0.6/1.2	3.0	3.17	19.5	7	0.4	80~350	4	3480	1
062020	86BYG350CH-SAKSHL-0301	3	0.6/1.2	3.0	3.17	19.5	7	0.4	80~350	4	3480	2
062060	86BYG350AL-SAKSML-0601	3	0.6/1.2	6.0	0.9	3.6	2.5	0.4	24~70	2	1320	1
062085	86BYG350AL-SAKSHL-0601	3	0.6/1.2	6.0	0.9	3.6	2.5	0.4	24~70	2	1320	2
062070	86BYG350BL-SAKSML-0601	3	0.6/1.2	6.0	1.2	5.2	5	0.4	24~70	3	2400	1
062086	86BYG350BL-SAKSHL-0601	3	0.6/1.2	6.0	1.2	5.2	5	0.4	24~70	3	2400	2
062080	86BYG350CL-SAKSML-0601	3	0.6/1.2	6.0	1.6	6.7	7	0.4	24~70	4	3480	1
062087	86BYG350CL-SAKSHL-0601	3	0.6/1.2	6.0	1.6	6.7	7	0.4	24~70	4	3480	2

Matched Driver:

三相 86 高压电机 (80~350VDC) : SH-32206 SH-32206N SH-32215

三相 86 低压电机 (24~70VDC): SH-30806 SH-30806N SD-30807

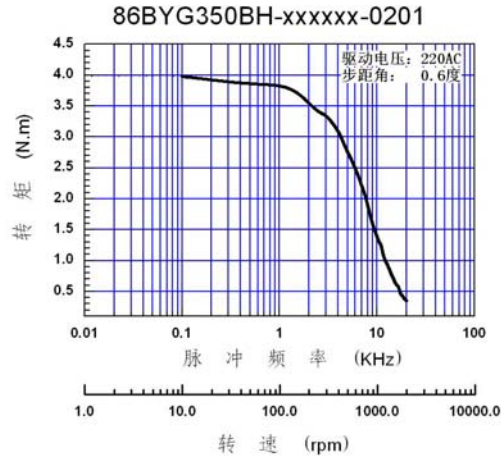
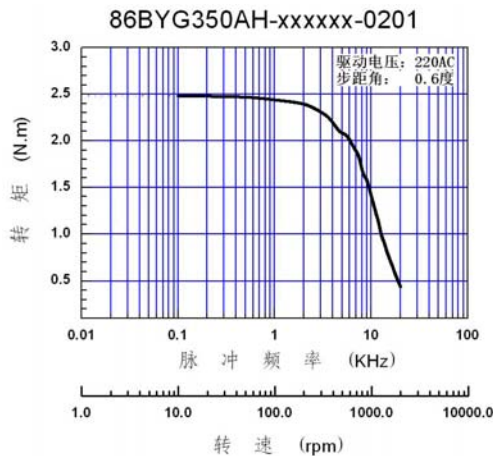
Model Description

86 BYG 3 50 A H-S A K S M L-020 1

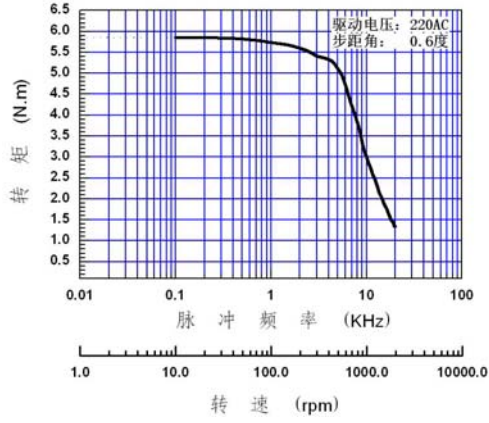
Design Codes			
Current	020: 2A	030: 3A	060: 6A
Wiring Form	L : lead line, three phase three line		A: air plug
Measurement	M: Metric	B: British	H: special dimension
Shell	S: square		R: round
Shaft Key	K: flat		S: plain shaft
Shaft Length	A: standard		B: extension
Shaft Form	S: single		B: double
Voltage Class	L: low voltage		H: high voltage
Body Length			
Rotor Teeth	50: 50 teeth		
Phase	3: three phase		
Structure	BYG: Hybrid		
Frame Number			

【Note】 product can be customized according to customer demand. The end of product model marked Ver *.* is special customized product, and the *.* is a special customized version number.

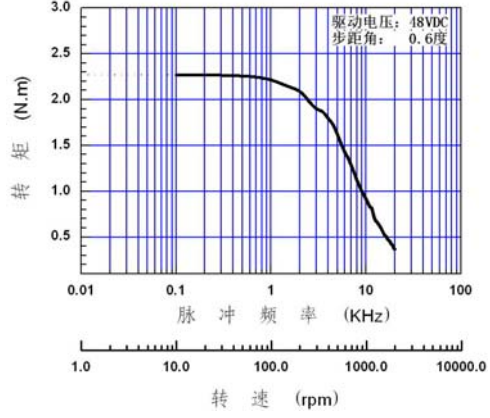
Torque-frequency Characteristics



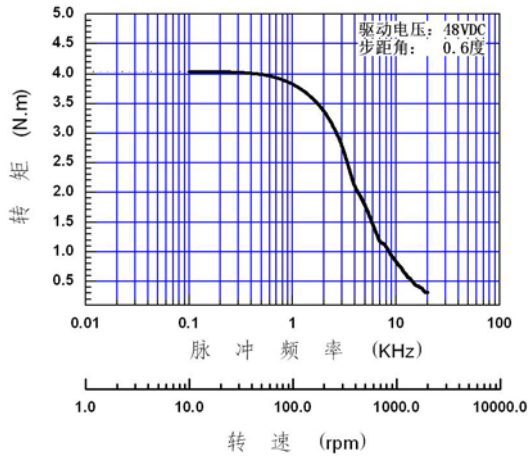
86BYG350CH-xxxxxx-0301



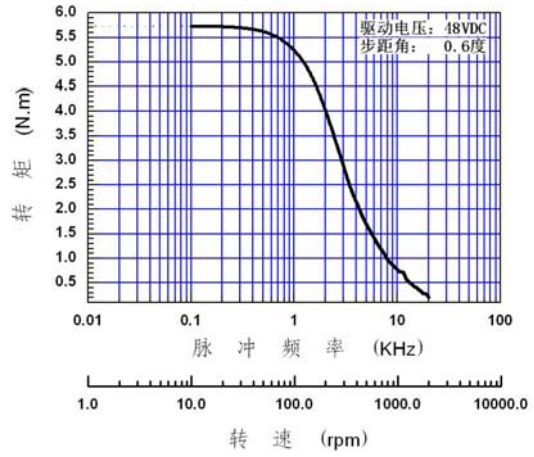
86BYG350AL-xxxxxx-0601



86BYG350BL-xxxxxx-0601

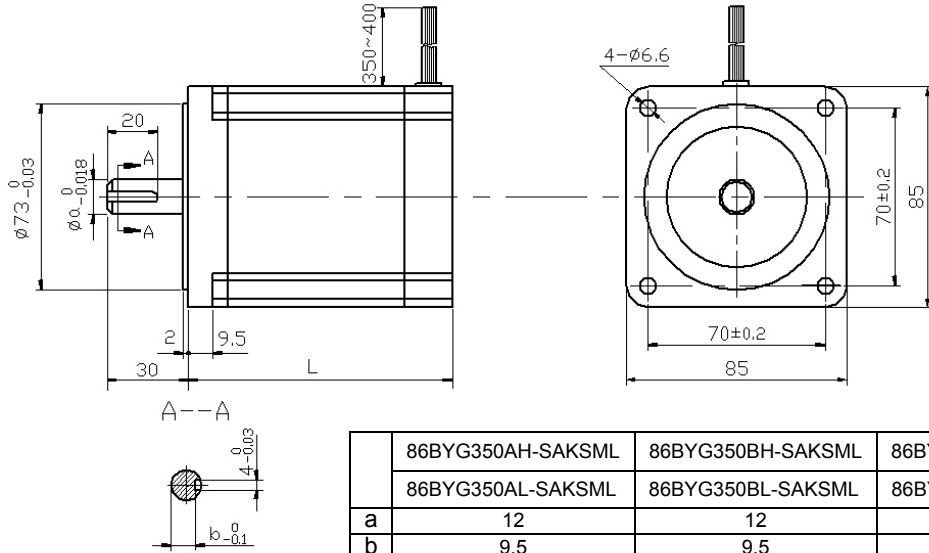


86BYG350CL-xxxxxx-0601

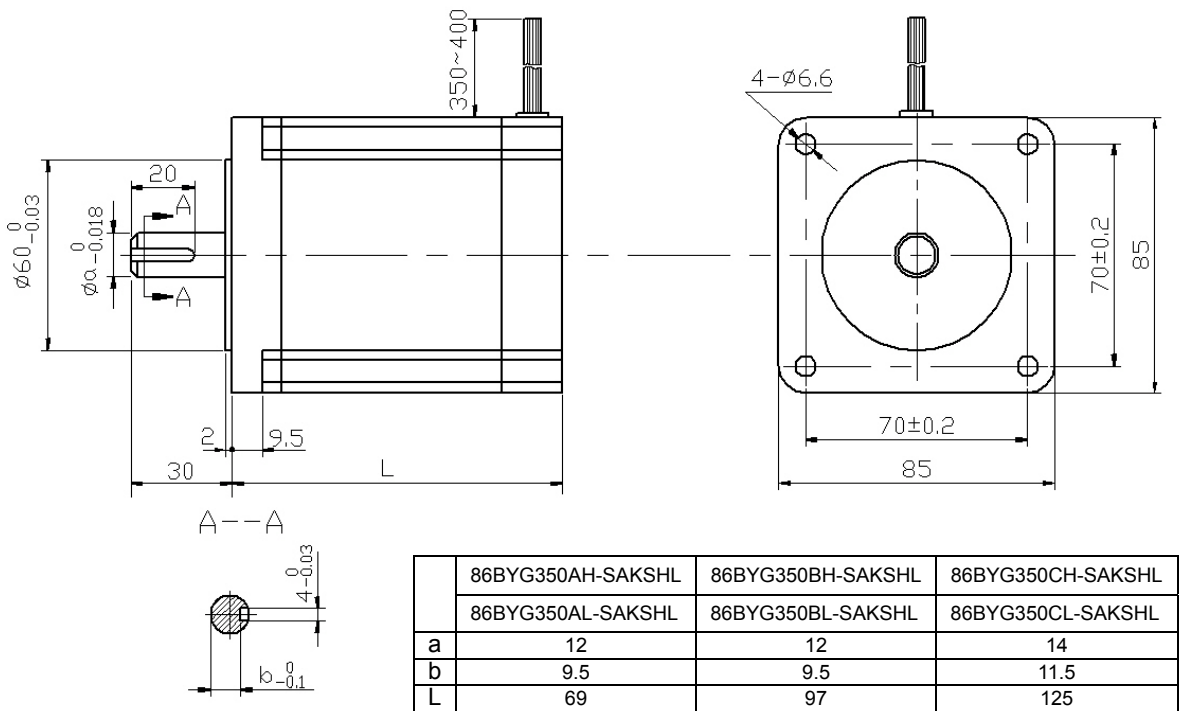


Dimension [Unit: mm]

1 86BYG350 xx - SAKSML - xxxx



2 86BYG350 xx - SAKSHL - xxxx



Connection

Lead color	Black	Brown	Blue
Motor line	U	V	W

Note:

First, when motor is installed, please use the front cover for mounting spigot orientation, and note tolerances. Ensure the concentricity of the motor shaft and the load shaft, otherwise it will cause the motor shaft to be bended and be broke.

Second, when the motor is connected with the drive, the wiring sequence of black, brown and blue three wires is not required.



Manufacturer: Beijing Hollysys Electric Technology Co.,Ltd.
Add: 10th Floor, Block A, Hui Zhi Tower, 9 Xueqing Road,
Haidian District, Beijing
Zip code:100085 Postal add: P.O. Box 2877,Beijing
Telephone operator: (010)62932100
Sales hotline: (010)62927938
Fax: (010)62927946
Website: www.syn-tron.com

Nanjing Office: (025) 84293632/37/52/53
Shenzhen Branch:(0755) 26581960/61/62